



  
**National Public School**  
— KR PURAM —

# IGNITING CURIOSITY & NURTURING CREATIVITY

PROSPECTUS 2025-2026  
[www.npskrpuram.com](http://www.npskrpuram.com)







# WELCOME NOTE

*National Public School, KR Puram, part of the prestigious NPS family, is located at Hirandahalli Village, Virgonagar, Bangalore. Spanning 6 acres, our campus is thoughtfully designed with modern facilities that nurture students to become future leaders, equipped with diverse skills for today's world.*

*Under the guidance of Dr. K. P. Gopalkrishna, Chairman of the NPS Group, we are committed to providing a holistic education. Students will benefit from our advanced IT, Science, and Robotics labs, alongside excellent sports facilities for Basketball, Cricket, Football, and Skating, allowing them to explore academics and athletics.*

*With a flexible curriculum that embraces the latest educational trends, we empower students to adapt and succeed. We aim to ignite curiosity, inspire passionate learning, and cultivate leaders ready to impact positively.*



**DR. K P GOPALKRISHNA**

CHAIRMAN, NPS GROUP OF INSTITUTIONS

## MESSAGE FROM THE DESK OF OUR CHAIRMAN

*"Education is the most powerful weapon which you can use to change the world."*

- Nelson Mandela

Few things have greater importance to parents than the education of their children. Every parent looks for academic excellence, good values, and discipline for their children. Choosing the right school for them is therefore a crucial decision.

NPS provides high standards for educational excellence to its students. We stimulate creativity and develop problem-solving capabilities in each student. As a family-oriented school, we believe that the partnership between the family and school is the foundation of a student's fulfillment and success in later life.

All the dynamic institutions in the world today look forward to introducing and affecting a creative approach to educational curriculum. Teachers play a major role in implementing and supporting the students to gain competence in their efforts.

Our objective at NPS is to provide a happy, balanced, and challenging environment where our students have the opportunity to fulfill their individual talents and goals. In parallel, we provide a wide range of cultural, sporting, and co-curricular activities and a chance to exercise leadership in a sensible and respectful environment.

**DR. KP GOPALKRISHNA**

Chairman, NPS Group of Institutions, NAFL  
and TISB



**MRS. GEETHA SOMANATHAN**

PRINCIPAL, NPS KR PURAM

## MESSAGE FROM THE DESK OF OUR PRINCIPAL

*"Education is the key to unlock the golden door of freedom."*

- George Washington Carver

At National Public School, KR Puram, we are devoted to delivering high-quality education that encourages a passion for learning and academic success. We aim to inspire curiosity, nurture critical thinking skills, and prepare our students to excel in a rapidly evolving world. Therefore, our curriculum is both comprehensive and flexible, designed to meet high academic standards while taking into account each student's particular needs.

We also understand the vital role sports play in our student's holistic development. Our cutting-edge sports facilities give students the chance to develop their athletic skills, enabling them to compete at both national and international levels.

Our top priority continues to be student safety. We uphold stringent safety protocols, which include the latest surveillance systems, safe transportation options, and a secure campus environment. With a well-balanced focus on academics, athletics, and safety, we are committed to developing well-rounded individuals ready for future success.

Best wishes,

**Mrs. Geetha Somanathan**

Principal, NPS, KR Puram



# NPS - BEST PLACE FOR YOUR CHILD'S EDUCATION

NPS, KR Puram, is a future-oriented institution committed to the philosophy of "Education for Life." We celebrate diversity in a safe, healthy, and supportive environment where every student is valued, supported, and cared for.

This school recognises its ambience as an excellent framework for both academics and personal growth. It empowers students to strive for excellence not only in the academic arena but also in co-curricular and extra-curricular pursuits.

We wish to train students to excel in every walk of life. Hence, we offer a wide range of co-curricular and extra-curricular activities that enable them to develop their social skills and instil core values and traditions.

*"Education is not preparation for life; education is life itself"*

*- JOHN DEWEY*

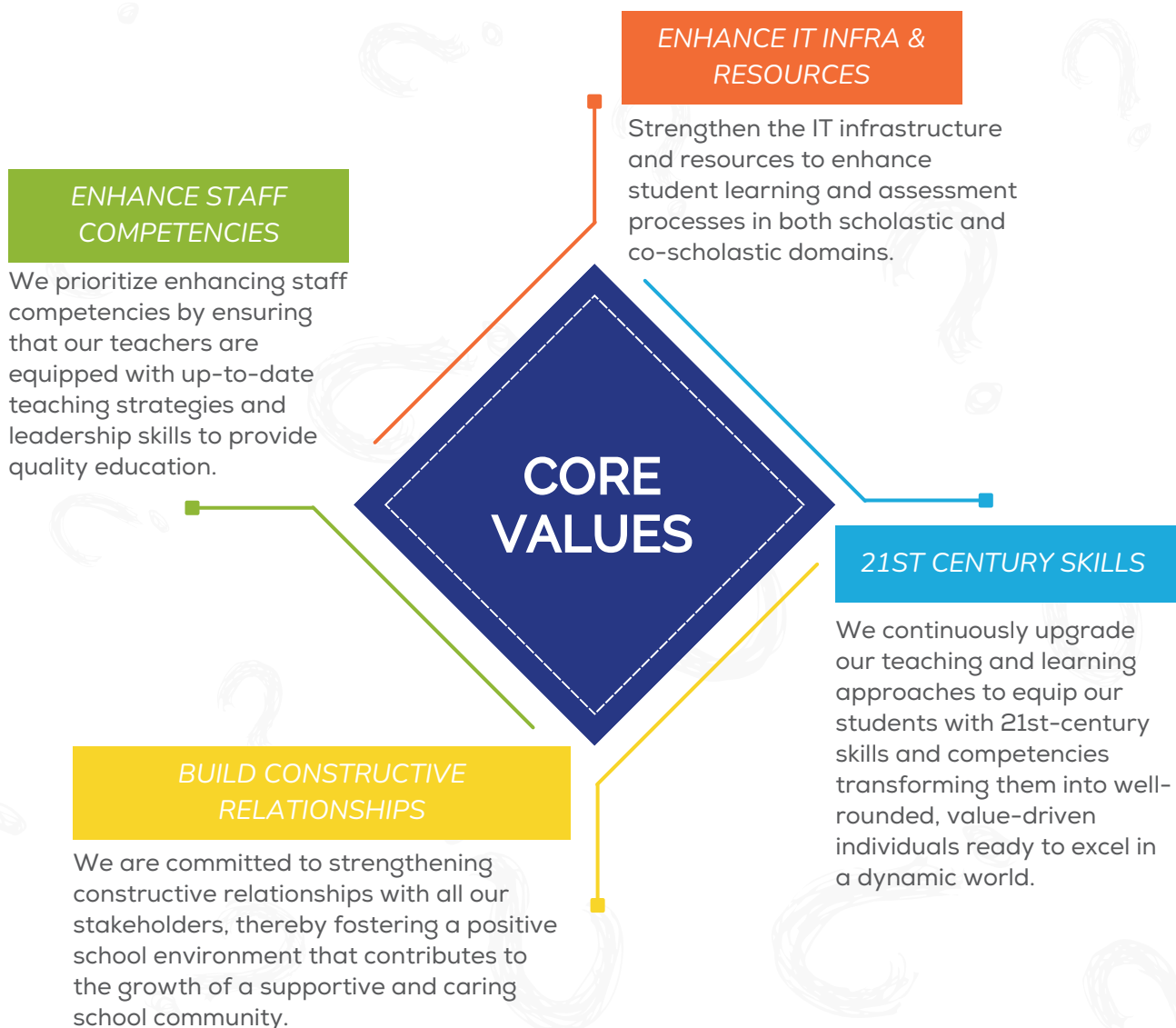


# VISION

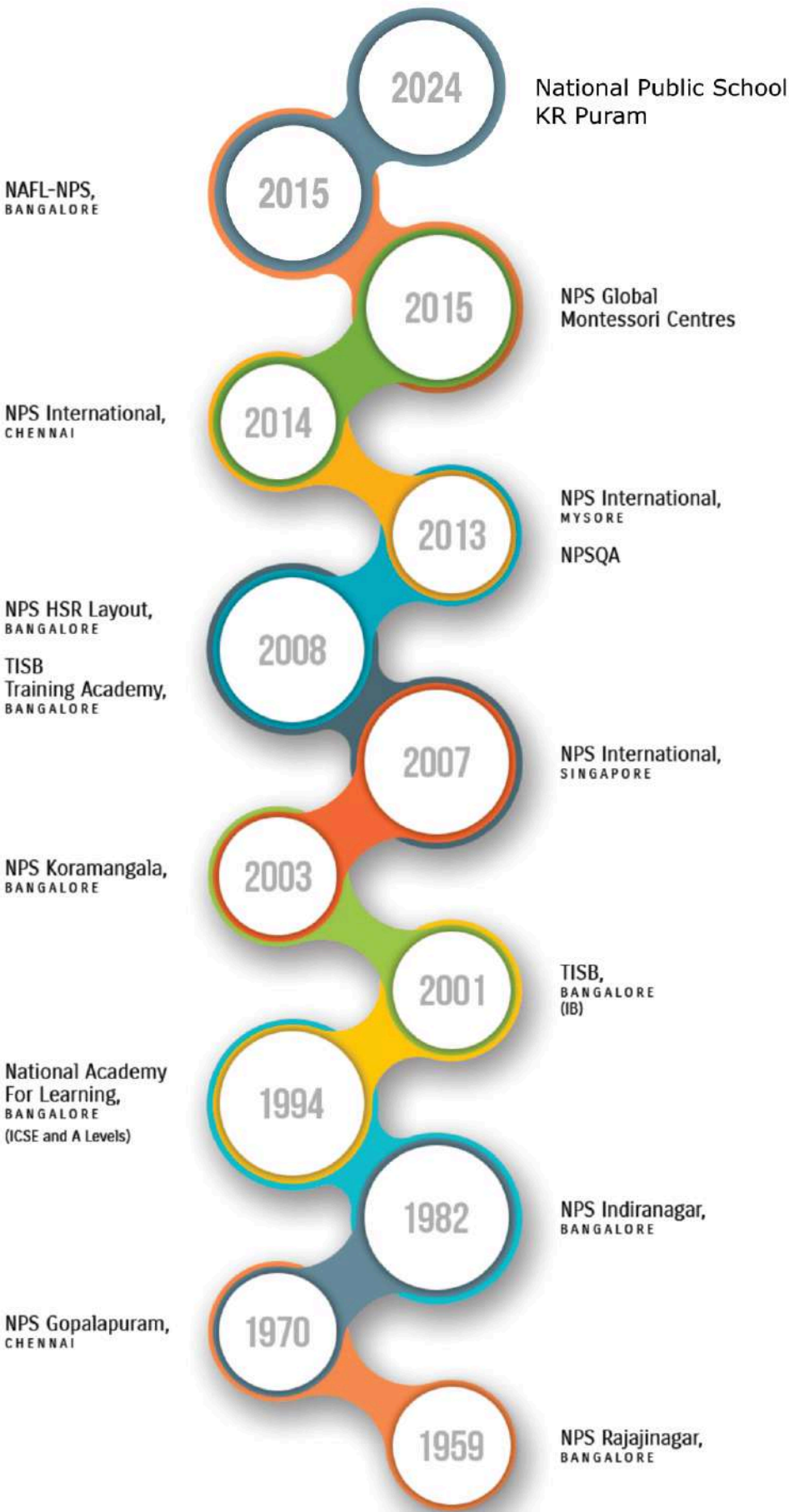
Within an empowering, child-centric environment, through numerous learning opportunities and best teaching practices, we strive to develop socially responsible, independent, knowledgeable, lifelong learners and leaders with multi-dimensional skills, values, and integrity to positively impact and contribute as Global Citizens.

# MISSION

- Continuously evolve teaching learning strategies to equip students with skills and competencies in preparation for their entry into a world beyond School.
- Provide a plethora of opportunities to all students to develop the 21st-century skills to transform themselves into value-driven versatile well-grounded individuals.
- Enhance staff competencies through rigorous professional development programmes laying emphasis on teacher training and leadership training.
- Continue to build constructive relationships with all our stakeholders thereby creating a positive school climate which helps to extend a caring school community.
- Enhance IT infrastructure and resources to augment student learning and assessments across scholastic and co-scholastic areas.
- Strive towards impacting the community by undertaking outreach initiatives and environmental projects in the neighbourhood.



# The NPS Family





# SCHOLASTIC PROGRAMME

At NPS, KR Puram, we emphasize training minds on how to learn, thereby encouraging independent thinking and research-oriented learning. Our curriculum is very dynamic and keeps pace with changing global standards. We implement modern teaching methodologies with the help of interactive technologies while making lessons highly engaging and effective.

We begin by introducing collaborative learning in Primary education and gradually introduce real-world programs with interdisciplinary studies throughout Middle School. This is also accompanied by enrichment activities including outbound trips and student exchange programs

## FOUNDATIONAL 1 NURSERY TO UKG

Our Foundational 1 Program, from Nursery to UKG is built on the best practices of Montessori and Kindergarten that offers an all-rounded early education experience. We focus on language, numeracy, creativity, physical fitness, and social skills through an engaging and well-structured curriculum.

Through these formative years, we build a solid foundation for important childhood competencies by promoting holistic growth within our nurturing and supportive learning environment.

## FOUNDATIONAL 2 GRADES I TO II

The Foundational 2 Program focuses on Grades I to II. This program helps reinforce the core competencies in literacy and numeracy that have been taught to student in their early years. By fostering an integrated curriculum that encourages curiosity, creativity, critical thinking, social development and active engagement in learning, our students are prepared for future academic success.

## PREPARATORY GRADES III TO V

Our Preparatory Program for Grades III to V is designed to help our students cultivate critical thinking, collaboration, and problem-solving skills. The program is based on a well-balanced curriculum that equips students to become independent learners who are ready to face the challenges of higher education.

## MIDDLE-SCHOOL GRADES VI TO VII

Our Middle School Program for Grades VI to VII focuses on the development of analytical thinking, problem-solving skills, and in-depth subject understanding. We follow a dynamic curriculum that encourages students to become independent learners who can think creatively and work effectively together to face the challenges posed by higher secondary education.



# REDISCOVER LEARNING

We at NPS, KR Puram, believe that the true value of an academic institution lies in the value it brings to the development of every student.

The academic goals for the school are as follows:

- To ensure qualification for all students seeking entrance into colleges and universities globally.
- To provide multi-faceted education with a strong base in English, Mathematics, and Science.
- To enable students to benefit from a trilingual education system.
- To develop and enhance logical thinking and reasoning abilities in students.
- To prepare students with proficiency and capabilities to successfully excel in a competitive global environment.

*“Learning is the key to unlocking the world, a passport to freedom.”*

*-OPRAH WINFREY*



# GIVE YOUR CHILD THE NPS ADVANTAGE

Here at NPS, KR Puram, we believe that a comprehensive school experience goes beyond mere academics. We encourage students to think out of the box and express themselves innovatively and creatively across multiple disciplines like art, music, sports, and leadership.

We help develop their talents through activities like dance, theatre, and drama that offer platforms for self-exploration and personal growth. By integrating intellectual development in tandem with creative exploration, we enable students to pursue their interests and passions.

Our holistic approach equips them with all the skills and attitudes required to become innovative, future-ready individuals in a progressive global landscape.





# CO-SCHOLASTIC PROGRAMME



**ART**

**MUSIC**



**DANCE**



**PHYSICAL  
EDUCATION**





# REDISCOVER THE JOY OF SPORTS

## International Sports Facility

We consider play to be fundamentally important for holistic development and learning in our students. Playing sports is an essential gateway to the world. It equips students with the social, intellectual, physical, and emotional skills they require for academic success and lifelong achievement.

We make sure to incorporate play in balance with academics to help promote creativity and critical thinking in our students. At NPS, KR Puram, we provide well designed indoor and outdoor sports facilities that emphasize the importance of physical activity in education.



Skating



Cricket



Basketball



Football



# School Fee Structure 2025-2026

NEP Structure	Class	Admission Fee	School Fee
Foundational - 1	Nursery to UKG	25,000/-	1,20,000/-
Foundational - 2	I STD & II STD	25,000/-	1,50,000/-
Pre-preparatory	III STD to V STD	25,000/-	1,65,000/-
Middle-school	VI STD to VIII STD	25,000/-	1,80,000/-

**Fee Inclusions:** Annual Fee, Tuition Fee, Activity Fee, Field Trip, Technology Fee.

**Sports:** Basketball, Football, Cricket, Skating, Martial Arts.

**Fee Exclusions:** Books, Uniform, Bus, Post School - Sports specialization coaching, excursions/day out trips and any other optional competitions.

**School Timing:**

Nursery to UKG - 08:15AM – 12:15PM (Monday – Friday)

I STD to VIII STD - 08:15AM – 02:45PM (Monday – Friday)

## Payment Structure

Full term fees being paid in a single instalment shall be eligible for a 5% rebate.

Payments being made in instalments need to enable ENACH registration to help the parents pay their ward's fee instalment directly from their bank account in a timely manner. (No bank charges applied)

Class	Date of Adm	Date of Adm	10th Sept	10th Dec
Nursery to UKG	25,000/-	40,000/-	40,000/-	40,000/-
I STD & II STD	25,000/-	50,000/-	50,000/-	50,000/-
III STD to V STD	25,000/-	55,000/-	55,000/-	55,000/-
VI STD to VIII STD	25,000/-	60,000/-	60,000/-	60,000/-

**Any dishonoured payment will attract a penalty.**

**Payments only via Online Transfer.**

**ALL PAYMENTS ARE NON-REFUNDABLE.**



# Bus Fee Structure 2025-2026

Distance	Fee
0 KMS – 7.9 KMS	30,000/-
8 KMS – 11.9 KMS	35,000/-
12 KMS - 16.9 KMS	40,000/-
17 KMS - 19.9 KMS	45,000/-
20 KMS +	50,000/-

- The Distance is calculated via Google maps
- Transport Services will start from the third working day, on remittance of the Transport Fee.
- The bus service includes the pick-up/drop-off of students from and to designated centralized locations. kindly note, there will be no door-to-door service.
- Seat Allocation route wise will occur on first come first serve basis only.
- Payment to be made Via Online Transfer only.
- The above-mentioned fees are inclusive of the GPS Service.

#### Payment Structure:

- Full fees to be paid during enrollment.
- Payments being made in instalments need to enable ENACH registration to help the parents pay their ward's fee instalment directly from their bank account in a timely manner. (No bank charges applied)

Distance	1st Instalment (15st May)	2nd Instalment (1st Nov)	Total Fee
0 KMS – 7.9 KMS	15,000/-	15,000/-	30,000/-
8 KMS – 11.9 KMS	17,500/-	17,500/-	35,000/-
12 KMS - 16.9 KMS	20,000/-	20,000/-	40,000/-
17 KMS - 19.9 KMS	22,500/-	22,500/-	45,000/-
20 KMS +	25,000/-	25,000/-	50,000/-

**Any dishonoured payment will attract a penalty.**

**Payments only via Online Transfer.**

**ALL PAYMENTS ARE NON-REFUNDABLE.**

Kindly note that transportation cannot be withdrawn in the middle of the term. Additionally, if the school is forced to close due to unforeseen circumstances these fees will not be refunded or adjusted for any unused days in the already commenced payment schedules.



# WORLD CLASS FACILITIES

NPS, KR Puram, is equipped with state-of-the-art laboratories that allow students to have hands-on opportunities to conduct experiments, closely observe live specimens, and have access to scientific tools for in-depth analysis. Under the guidance of our experienced lab assistants and teachers, these facilities create an environment conducive to scientific inquiry and exploration.



Smart Class Rooms



Computer Lab



Library



Robotics Lab



Composite Lab



CCTV Surveillance



Science Lab



GPS Enabled Bus Service



Mathematics Lab



Healthcare





# National Public School KR PURAM



The International School, Bangalore (TISB)



NPS Global Montessori Center



National Academy for learning (NAFL)



National Public School, Rajajinagar



National Public School, Indiranagar



NPS, HSR Layout, Bangalore



National Public School, Koramangala



National Public School, Varthur



National Public School, JP Nagar

 **+91 9108910101**

 Sy No. 72/1 & 44/6, Hirandahalli Village, Bidarahalli  
Hobli, Virgonagar Post, Bangalore - 560049

 [info@npskrpuram.com](mailto:info@npskrpuram.com)

